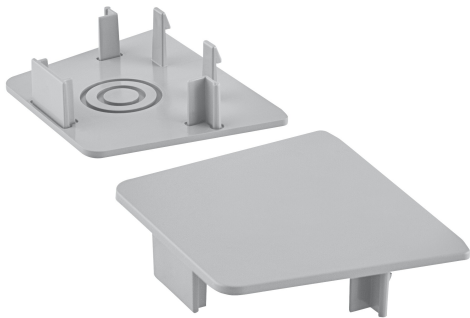


# PRODUCT DATASHEET

## TruSys® End Cap Energy Rail

TruSys® END CAP ENERGY RAIL | Endcaps for mounting rail



PERFOR-  
MANCE  
CLASS

---

### Product benefits

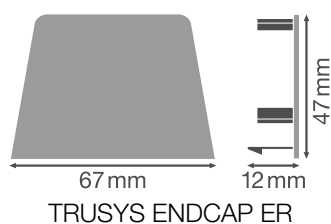
- Simple snap-in mounting of end caps



## TECHNICAL DATA

## Dimensions &amp; Weight

Length	12 mm
Width	67.00 mm
Height	47 mm
Product weight	21.00 g



## Materials &amp; Colors

Product color	Aluminum
Body material	Aluminum


## Application &amp; Mounting

Mounting location	Ceiling
Replaceable light source	No

## Certificates &amp; Standards

Ball shot safe	No
----------------	----

## DOWNLOAD DATA

Tender texts		Document name
	Tender documents	TruSys END CAP ENERGY RAIL End Cap Energy Rail -EN

## LOGISTICAL DATA

Product code	Packaging unit (Pieces/Unit)	Dimensions (length x width x height)	Gross weight	Volume
--------------	------------------------------	--------------------------------------	--------------	--------

Product code	Packaging unit (Pieces/Unit)	Dimensions (length x width x height)	Gross weight	Volume
4058075100411	BAG 2	100 mm x 80 mm x 1 mm	44.00 g	0.01 dm <sup>3</sup>
4058075100428	Shipping box 6	176 mm x 86 mm x 82 mm	162.00 g	1.24 dm <sup>3</sup>

The mentioned product code describes the smallest quantity unit which can be ordered. One shipping unit can contain one or more single products. When placing an order, for the quantity please enter single or multiples of a shipping unit.

DISCLAIMER

Subject to change without notice. Errors and omission excepted. Always make sure to use the most recent release.