

# PRODUCT DATASHEET

## SPOT MULTI 3 x 30W 3000K FL WT/BK

SPOT MULTI 3x30W | Recessed mounted spotlight, swivelable with three spot



### Areas of application

- Accent- and general lighting for all kind of salesrooms
- Fashion shops, accessories shops
- Shops, boutiques
- Hotel rooms
- Cafés

### Product benefits

- Low flicker light thanks to special electronic control gear
- High luminous efficacy
- Covering against other ceiling installations thanks to closed sheet steel housing
- Easy replacement of external driver thanks to plug with bayonet lock
- Functional and minimalistic design
- 5 years guarantee

### Product features

- Large faceted reflector for high light output
- Beam angle: 38°
- Gimbal adjustment angle: +/- 25°



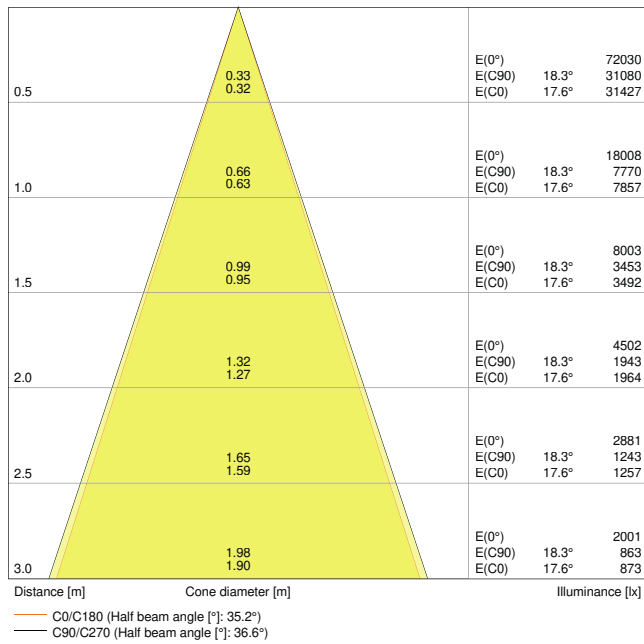
## TECHNICAL DATA

### Electrical data

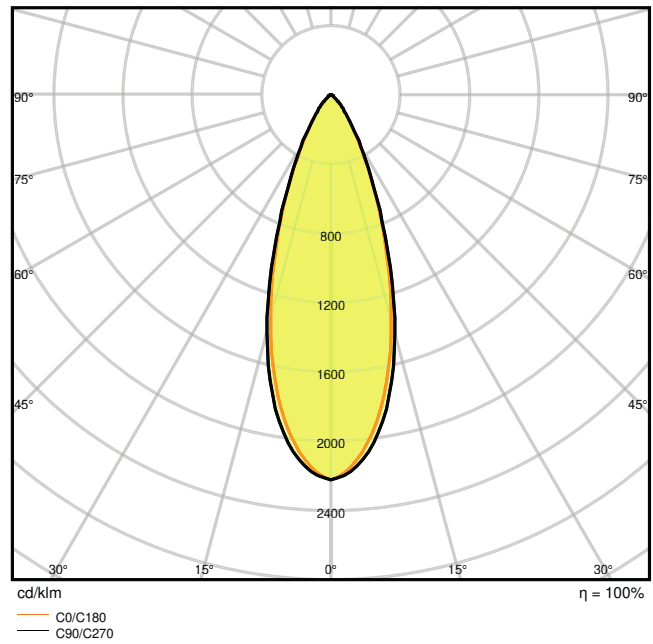
Nominal wattage	3*30 W
Nominal voltage	220...240 V
Mains frequency	50...60 Hz
Nominal current	450 mA
Inrush current	69 A
Inrush current time $T_{h50}$	< 3.4 $\mu$ s
Max. number of luminaires per miniature circuit breaker B16	10
Max. number of luminaires per miniature circuit breaker C10	8
Max. number of luminaires per miniature circuit breaker C16	13
Power factor $\lambda$	$\geq 0.90$
Total harmonic distortion	< 15 %
Protection class	II
Operating mode	External LED driver

### Photometrical data

Luminous flux	3*2700 lm
Luminous efficacy	90 lm/W
Color temperature	3000 K
Light color (designation)	Warm White
Color rendering index Ra	> 80
Standard deviation of color matching	$\leq 4$ sdc <sub>m</sub>
Luminous intensity	-
Low flicker	Yes
Flickering metric (Pst LM)	-
Stroboscope effect metric (SVM)	-
Photobiological safety group acc. to EN62778	RG1
Beam angle	38 °



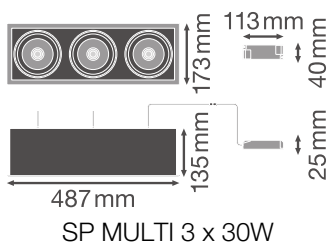
SP MULTI 3 x 30W3000K FL WT



SP MULTI 3 x 30W3000K FL WT

Dimensions & Weight

Length	487.00 mm
Width	173.00 mm
Height	135.00 mm
Product weight	3870.00 g



Materials & Colors

Product color	White
Housing color	White
Body material	Aluminum

Cover material	Polymethylmethacrylate (PMMA)
Glow Wire Test according to IEC 60695-2-12	650 °C
Mercury content	0.0 mg

### Application & Mounting

Ambient temperature range	-10...+40 °C
Type of connection	Screw terminal, 2-Pole (L,N)
Type of protection	IP20
Protection class IK (shock resistance)	IK03
Dimmable	No
Mounting type	Recessed
Mounting location	Ceiling
Application environment	Indoor
Mounting length	475 mm
Mounting width	160 mm
Mounting depth	250 mm
Adjustable	Yes
With light source	Yes

### Lifespan

Lifespan L70/B50 at 25 °C	50000 h <sup>1)</sup>
Lifespan L80/B10 at 25 °C	45000 h <sup>1)</sup>
Lifespan L80/B50 at 25 °C	45000 h
Lifespan L90/B10 at 25 °C	30000 h
Number of switching cycles	50000

<sup>1)</sup> t[h]: L70 / B50 @ 25 °C (Ta), t[h]: L80 / B10 @ 25 °C (Ta), t[h]: L90 / B10 @ 25 °C (Ta)

### Control gear

ECG - Length	113 mm
ECG - Width	40 mm
ECG - Height	25 mm

### Certificates & Standards

Standards	CE / CB / ENEC / TÜV SÜD / RoHS
Luminaire with limited surface temperature, "D sign"	No
Ball shot safe	No

Replaceable light source (EPREL)

Not replaceable

## EQUIPMENT / ACCESSORIES



- Driver included

## Safety advice


- All electrical connections must be made by a qualified person.
- Caution, risk of electric shock.
- The luminaires are not suitable for covering with thermally insulated material.

## DOWNLOAD DATA

	Documents and certificates	Document name
	User instruction / safety instructions	UI Spot Multi
	On-Pack-Info	Legal Insert Spot LED
	Legal information	LSI SP MULTI
	Declarations of conformity	Attestation-of-Conformity SP SQ and Multi TÜV
	Declarations of conformity	EU Declaration of Conformity Spot Multi LEDV
	Photometric and lighting design files	Document name
	IES file (IES)	SP MULTI 3 x 30W3000K FL WT
	LDT file (Eulumdat)	SP MULTI 3 x 30W3000K FL WT
	ULD file (DIALux)	SPOTMULTI3x30W3000KFLWTBK
	UGR file (UGR table)	SP MULTI 3 x 30W3000K FL WT
	Light distribution curve type cone	SP MULTI 3 x 30W3000K FL WT
	Light distribution curve type polar	SP MULTI 3 x 30W3000K FL WT

CAD/BIM files		Document name
	BIM Revit 3D	Spot Multi
	CAD STEP 3D	SP MULTI 3x30W

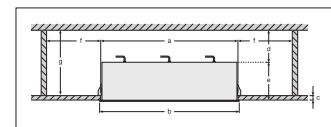
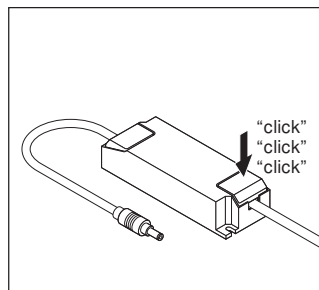
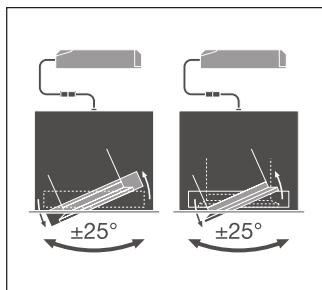
Tender texts		Document name
	Tender documents	SPOT MULTI 3x30W 3000K FL WTBK-EN

**LOGISTICAL DATA**

Product code	Packaging unit (Pieces/Unit)	Dimensions (length x width x height)	Gross weight	Volume
4058075114005	Folding box 1	210 mm x 525 mm x 170 mm	4050.00 g	18.74 dm <sup>3</sup>
4058075114012	Shipping box 2	535 mm x 220 mm x 400 mm	16760.00 g	47.08 dm <sup>3</sup>

The mentioned product code describes the smallest quantity unit which can be ordered. One shipping unit can contain one or more single products. When placing an order, for the quantity please enter single or multiples of a shipping unit.

**ADDITIONAL CATALOG INFORMATION**



**References / Links**

– For Guarantee see [www.ledvance.com/guarantee](http://www.ledvance.com/guarantee)

**DISCLAIMER**

Subject to change without notice. Errors and omission excepted. Always make sure to use the most recent release.