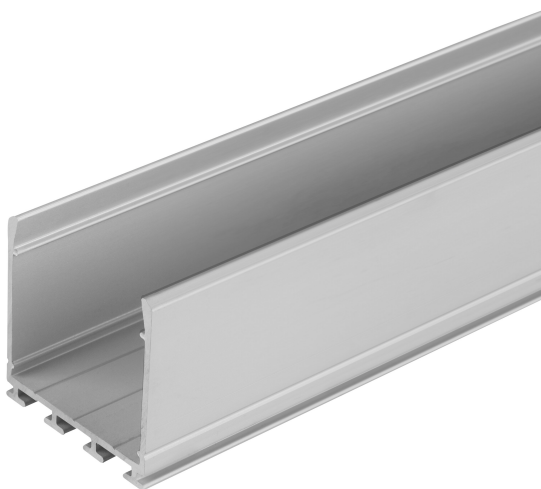


# PRODUCT DATASHEET

## LS AY -PW03/U/26X26/14/1

LED STRIP PERFORMANCE-1500 PROTECTED | High performance IP66 protected LED strips with 1500 lm/m for high requirements



---

### Areas of application

- General indoor illumination

---

### Product benefits

- Robust aluminum profile
- Quick and simple installation

## TECHNICAL DATA

## Dimensions &amp; Weight

Length	1000 mm
Width	26.0 mm
Height	26.0 mm
Product weight	240.00 g

## Colors &amp; materials

Product color	Grey
---------------	------

## Temperatures &amp; operating conditions

Ambient temperature range	-15...+45 °C
Temperature range in operation	-15...+45 °C






## Additional product data

Product remark	Can be combined with all LEDVANCE LED Strips including connectors and endcap
----------------	--

## LOGISTICAL DATA

Temperature range at storage	-35...+85 °C
------------------------------	--------------

## Accessories Optional

Product image	Product name	EAN
	LS AY -PC/W02/C/1	4058075402348
	LS AY -PW03/EC/H	4058075277489
	LS AY -PW03/MB	4058075276680
	LS AY -PC/W02/D/1	4058075279421
	LS AY -PW03/EC	4058075277458

## DOWNLOAD DATA

Documents and certificates		Document name
----------------------------	--	---------------



Declarations of conformity

LS AY PM\_PF\_PW\_PC

Tender texts		Document name
--------------	--	---------------



Tender documents

Wide Profiles for LED Strips PW03U26X26141-EN

## LOGISTICAL DATA

Product code	Packaging unit (Pieces/Unit)	Dimensions (length x width x height)	Gross weight	Volume
4058075278165	BAG 1	1,200 mm x 50 mm x 5 mm	241.00 g	0.30 dm <sup>3</sup>
4058075278172	Bundle 10	500 mm x 55 mm x 50 mm	2412.00 g	1.38 dm <sup>3</sup>
4058075278189	Shipping box 50	1,030 mm x 160 mm x 310 mm	12871.00 g	51.09 dm <sup>3</sup>

The mentioned product code describes the smallest quantity unit which can be ordered. One shipping unit can contain one or more single products. When placing an order, for the quantity please enter single or multiples of a shipping unit.

## DISCLAIMER

Subject to change without notice. Errors and omission excepted. Always make sure to use the most recent release.