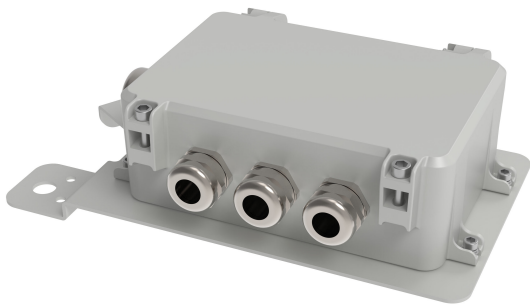


PRODUCT DATASHEET

FL MAX CONNECTOR BOX

FLOODLIGHT MAX CONNECTOR BOX | Connector box enables separate installation of PSU and luminaire



Areas of application

- Suitable for indoor and outdoor installations
- Ports/logistics: lights deep & wide areas, ideal with C5 corrosion protection

Product benefits

- For extreme temperatures: -40°C to $+50^{\circ}\text{C}$ (outdoors), up to $+40^{\circ}\text{C}$ (indoors)
- Quick wiring: pre-fitted cable glands (IP66) enable safe, easy on-site connection
- Robust and weatherproof: IP66 / IK08, C5-M corrosion protection for harsh environments

Product features

- Connector box can be mounted directly to luminaire bracket
- Flexible driver unit; install up to 150 m away to lighten the mast.
- Climate membrane protects from water and lets air pass through

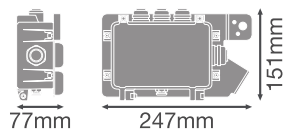
TECHNICAL DATA

Electrical data

| | |
|------------------|---|
| Protection class | I |
|------------------|---|

Dimensions & Weight

| | |
|----------------|-----------|
| Length | 247.0 mm |
| Width | 151.0 mm |
| Height | 77.0 mm |
| Product weight | 1100.00 g |



FL MAX CONNECTOR BOX

Materials & Colors

| | |
|--------------------------|----------|
| Housing color | Gray |
| RAL Color (most similar) | RAL 9006 |

Application & Mounting

| | |
|---|--------------|
| Ambient temperature range | -40...+50 °C |
| Type of protection | IP66 |
| Corrosion resistance class acc. to EN 12944 | C5 |
| Replaceable light source | No |


Certificates & Standards

| | |
|-----------|-----------------|
| Standards | CE / UKCA / EAC |
|-----------|-----------------|

Additional product data

| | |
|----------------|------------------------------|
| Product remark | Available from December 2025 |
|----------------|------------------------------|







Accessories Optional

| Product image | Product name | EAN |
|--|----------------------|---------------|
|  | FL MAX CONNECTOR BOX | 4099854696176 |

EQUIPMENT / ACCESSORIES

- Cable glands included and preinstalled in the power supply

DOWNLOAD DATA

| Documents and certificates | | Document name |
|--|--|--|
|  | User instruction / safety instructions | User Instruction G11249011 FL MAX P GEN2 |
|  | Legal information | Safety Insert G11218828 |
|  | Legal information | Legal Insert G11248547 |
|  | Legal information | Informationstext 18 Abs 4 ElektroG |
|  | Declarations of conformity | FLOODLIGHT MAX |
|  | Declarations of conformity UKCA | FL MAX UKCA DECLARATION |

LOGISTICAL DATA

| Product code | Packaging unit (Pieces/Unit) | Dimensions (length x width x height) | Gross weight | Volume |
|---------------|------------------------------|--------------------------------------|--------------|-----------------------|
| 4099854696176 | Folding box 1 | 257 mm x 162 mm x 92 mm | 1147.00 g | 3.83 dm ³ |
| 4099854696183 | Shipping box 5 | 487 mm x 282 mm x 199 mm | 5845.00 g | 27.33 dm ³ |

The mentioned product code describes the smallest quantity unit which can be ordered. One shipping unit can contain one or more single products. When placing an order, for the quantity please enter single or multiples of a shipping unit.

DISCLAIMER

Subject to change without notice. Errors and omission excepted. Always make sure to use the most recent release.