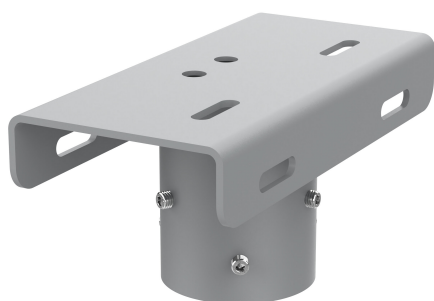


PRODUCT DATASHEET

FL TRAVERSE 1/2 42/60/76MM

FLOODLIGHT TRAVERSE | Traverse for mounting floodlights on poles and masts



Areas of application

- Sports facilities
- Industrial area
- Parking lots
- Street lighting

Product benefits

- Flexible holder: one traverse suitable for three common diameters of 42, 60 and 76 mm
- Two separate cable entries with rubber seals enable secure, weatherproof installation inside the mast
- Corrosion resistance C5: tested in environments with high salinity

Product features

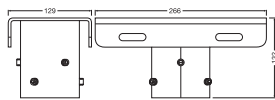
- Suitable for masts with diameter of 42, 60 and 76 mm for wide range of outdoor installations
- Mounting of 1 floodlight centrally on the traverse or 2 floodlights mounted on the sides for wider illumination
- Quick installation of the floodlight with just one screw or optionally with two screws for greater stability
- Locking screws for secure attachment to the mast head
- Suitable for most types in the FLOODLIGHT FLEX, MAX, AREA and GEN 4 series



TECHNICAL DATA

Dimensions & Weight

Length	266 mm
Width	129 mm
Height	132 mm
Product weight	2765.00 g



FL TRAVERSE 1/2 42/60/76MM

Materials & Colors

Product color	White aluminum
RAL Color (most similar)	RAL 9006
Body material	Steel

Application & Mounting

Ambient temperature range	-30...+50 °C
Temperature range at storage	-30...+80 °C
Mounting type	Screws
Mounting location	Pole
Replaceable light source	No

Certificates & Standards

Standards	CE / CB / UKCA / EAC
-----------	----------------------



Additional product data

Product remark	Available from December 2025
----------------	------------------------------

EQUIPMENT / ACCESSORIES

- Screws for different mast diameters included

DOWNLOAD DATA

Documents and certificates		Document name
	User instruction / safety instructions	FL TRAVERSE 1/2 42/60/76MM
	Legal information	Legal Insert G11249180

LOGISTICAL DATA

Product code	Packaging unit (Pieces/Unit)	Dimensions (length x width x height)	Gross weight	Volume
4099854680038	Folding box 1	138 mm x 278 mm x 138 mm	2886.00 g	5.29 dm ³
4099854680045	Shipping box 3	437 mm x 302 mm x 174 mm	9224.00 g	22.96 dm ³

The mentioned product code describes the smallest quantity unit which can be ordered. One shipping unit can contain one or more single products. When placing an order, for the quantity please enter single or multiples of a shipping unit.

ADDITIONAL CATALOG INFORMATION



DISCLAIMER

Subject to change without notice. Errors and omission excepted. Always make sure to use the most recent release.