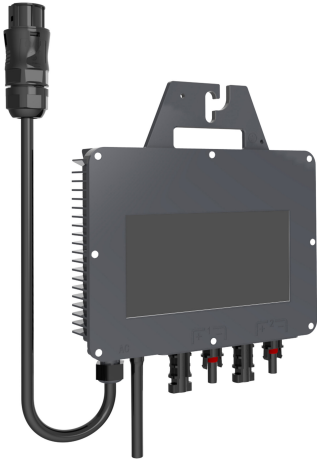


PRODUCT DATASHEET

LMS 0.8K F2



Areas of application

- Residential installations
- Both roof and balcony systems

Product benefits

- Flexibility for panel layout and expansion
- Outdoor applications only
- No additional Wi-Fi transmitter needed
- Easy operation and installation
- Cooling by natural convection
- 12 years of product guarantee

Product features

- Compact size
- Type of protection: IP67
- Wi-fi communication
- Wide operating temperature range: -40...+65 °C

TECHNICAL DATA

Electrical data

| | |
|--|--------------|
| Output phases | Single phase |
| Max. input power DC | 960 W |
| Input voltage DC | 60 V |
| MPP voltage | 30-45 V |
| Max. input current DC | 30 A |
| Max. input current DC per string input | 15 A |
| Max. input current DC per MPP tracker | 30 A |
| Number of independent MPPT inputs | 2 |
| String connections per MPPT input | 1 |
| Number of string connections | 1 |
| Number of applicable PV modules | 2 |
| Nominal output power AC | 800 W |
| Power consumption | <0.1 W |
| Usable battery capacity | No |

Dimensions & Weight

| | |
|----------------|-----------|
| Length | 220 mm |
| Width | 37 mm |
| Height | 220 mm |
| Product weight | 3000.00 g |

Additional product data

| | |
|--------------------------------|----------------|
| Integrated DC switch | No |
| Connection DC for battery | No |
| Suitable for emergency power | No |
| Charging controller integrated | No |
| With data logging | Yes |
| Wireless | Yes |
| Ethernet | No |
| Integrated transformer | Yes |
| Type of connection | MC4-Compatible |
| Temperature range in operation | -45...+65 °C |
| Ambient temperature range | -45...+65 °C |
| Outdoor application | Yes |
| Type of protection | IP67 |
| Product color | Black |




Efficiency

| | |
|------------------------------|------|
| Maximum efficiency | 95 % |
| European efficiency | 94 % |
| CEC efficiency (US products) | 94 % |

EQUIPMENT / ACCESSORIES

- Additional DC connectors for the outlets on the microinverter are included
- AC connector included
- Mounting screws included
- Antenna included

DOWNLOAD DATA

| Documents and certificates | | Document name |
|---|--|-------------------|
|  | User instruction / safety instructions | LMS-0.8K F2 |
|  | Declarations of conformity | LMS 0.4 0.8 2K F2 |
|  | Product family datasheet | LMS-0.8K F2 |

LOGISTICAL DATA

| Product code | Packaging unit (Pieces/Unit) | Dimensions (length x width x height) | Gross weight | Volume |
|---------------|------------------------------|--------------------------------------|--------------|-----------------------|
| 4099854583568 | Folding box 1 | 340 mm x 325 mm x 55 mm | 3600.00 g | 6.08 dm ³ |
| 4099854583575 | Shipping box 6 | 355 mm x 345 mm x 350 mm | 22600.00 g | 42.87 dm ³ |

The mentioned product code describes the smallest quantity unit which can be ordered. One shipping unit can contain one or more single products. When placing an order, for the quantity please enter single or multiples of a shipping unit.

References / Links

- For Guarantee see www.ledvance.com/guarantee

DISCLAIMER

Subject to change without notice. Errors and omission excepted. Always make sure to use the most recent release.