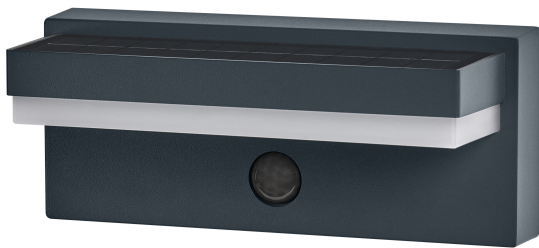


## PRODUCT DATASHEET

# Endura Style Solar Robust Sensor Wall IP54 USB Dark Grey

ENDURA STYLE SOLAR+USB ROBUST SENSOR | Solar-powered luminaire with additional USB-C charging option for integrated battery and motion and daylight sensor



### Areas of application

- Outdoor
- Entrance lighting
- Patios, balconies
- General illumination
- Facade and building illumination

### Product benefits

- Operating time with fully charged battery: up to 1 month (depending on the work mode and conditions)
- Solar & battery-powered luminaire
- Easy and quick installation, independent from connection to power supply
- Long-term energy and cost savings

### Product features

- Sustainable energy, low environmental impact
- Integrated rechargeable lithium battery which can be charged via USB cable
- Energy-efficient thanks to LED technology
- Robust technical design
- Easily detachable from the wall for charging thanks to slide-up mounting plate
- Highly efficient monocrystalline solar panel



- Type of protection: IP54
- Housing material: aluminum
- Diffuser made of opal polycarbonate
- PIR motion detection and daylight sensor, matching with housing color
- 2 different work modes - Mode 1: 100% light for 40 seconds when motion detected (dusk-to-dawn); Mode 2: 20% light permanently on + 100% light for 40 seconds when motion detected (dusk-to-dawn)
- Lower light smog, on-demand lighting (sensor version)

TECHNICAL DATA

Electrical data

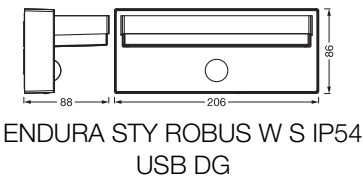
Nominal wattage	2.50 W
Nominal voltage	3,7 V
Nominal current	1000.000 mA
Protection class	III
Operating mode	Battery

Photometrical data

Luminous flux	180 lm
Total luminous flux of contained light sources	280 lm
Luminous efficacy	72 lm/W
Color temperature	3000 K
Light color (designation)	Warm White
Color rendering index Ra	> 80
Standard deviation of color matching	< 6 sdc <sub>m</sub>
Flickering metric (Pst LM)	≤1 %
Stroboscope effect metric (SVM)	≤0.4
Photobiological safety group acc. to EN62778	RG0
Beam angle	90 °

Dimensions & Weight

Length	206.00 mm
Width	88.00 mm
Height	86.00 mm
Product weight	550.00 g
Cable length	1000 mm



## Materials & Colors

Product color	Dark gray
Housing color	Dark gray
Body material	Aluminum
Cover material	Polycarbonate (PC)
Glow Wire Test according to IEC 60695-2-12	650 °C

## Application & Mounting

Ambient temperature range	-20...+40 °C
Temperature range at storage	-20...+80 °C
Type of protection	IP54
Protection class IK (shock resistance)	IK06
Dimmable	No
Mounting type	Surface
Application environment	Outdoor
With light source	Yes
Replaceable light source	No

## Lifespan

Lifespan L70/B50 at 25 °C	50000 h <sup>1)</sup>
Number of switching cycles	50000

<sup>1)</sup> t[h]: L70 / B50 @ 25 °C (Ta), t[h]: L80 / B10 @ 25 °C (Ta), t[h]: L90 / B10 @ 25 °C (Ta)

## Sensor

Type of sensor	Light / Motion
Sensor technology	Passive infrared (PIR)
Sensor detection angle	100 °
Sensor controlled switching time	0...40 s
Detection range of motion sensor	4...8 m
Detection threshold of daylight sensor	0...80 lx

## BATTERY

Type of Battery	Lithium ion
Battery size [GMS]	Others
Nominal voltage of battery	3.7 V
Nominal capacity of battery	1800 mAh

Battery charging time	9 h
-----------------------	-----

Certificates & Standards

Standards	CE / UKCA
Luminaire with limited surface temperature, "D sign"	No
Ball shot safe	No
Replaceable light source (EPREL)	Not replaceable






Additional product data

Product remark	Available from June 2025
----------------	--------------------------

Safety advice

- If the battery compartment (if applicable) does not close securely, stop using the product and keep it away from children. If you think batteries might have been swallowed or placed inside any part of the body, seek immediate medical attention.
- Please avoid: Maximal ambient temperature: +35 °C. Replacement of a battery with an incorrect type that can defeat safeguard (for example, in the case of some lithium battery types). Altitude during operation: 2000 m. Disposal of a battery into fire or a hot oven, or mechanically crushing or cutting of a battery, that can result in an explosion.

DOWNLOAD DATA

Documents and certificates		Document name
	User instruction / safety instructions	Endura Style Robus USB IP54
	Legal information	Informationstext 18 Abs 4 ElektroG
	Legal information	Safety insert G11221892
	Declarations of conformity	CE Declaration Endura Style USB
	Declarations of conformity UKCA	UKCA Declaration Endura Style USB

LOGISTICAL DATA

Product code	Packaging unit (Pieces/Unit)	Dimensions (length x width x height)	Gross weight	Volume
4099854415715	Folding box 1	97 mm x 217 mm x 98 mm	618.00 g	2.06 dm³
4099854415722	Shipping box 6	310 mm x 234 mm x 225 mm	4170.00 g	16.32 dm³

The mentioned product code describes the smallest quantity unit which can be ordered. One shipping unit can contain one or more single products. When placing an order, for the quantity please enter single or multiples of a shipping unit.

---

## DISCLAIMER

Subject to change without notice. Errors and omission excepted. Always make sure to use the most recent release.