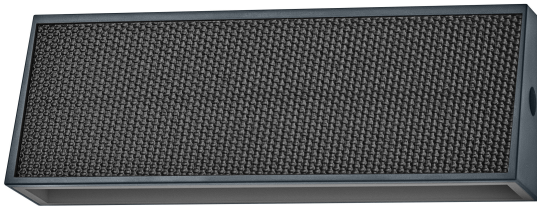


## PRODUCT DATASHEET

### Endura Style Solar Daylight Sensor Wall Updown IP54 Dark Grey

ENDURA STYLE SOLAR BRIGHT DAYLIGHT SENSOR | Solar-powered up and down lighting luminaires with high luminous flux, daylight sensor and IP65 protection option



#### Areas of application

- Outdoor
- Entrance lighting
- Patios, balconies
- General illumination
- Facade and building illumination

#### Product benefits

- Solar powered outdoor LED luminaire
- Indirect UP and DOWN lighting
- Easy and quick installation, independent from connection to power supply
- Long-term energy and cost savings

#### Product features

- Sustainable energy, low environmental impact
- Bright light
- Highly efficient monocrystalline solar panel
- PIR motion detection and daylight sensor, matching with housing color
- Lower light smog, on-demand lighting (sensor version)
- Type of protection: up to IP65



- Operating time with fully charged battery: up to 10 h (depending on the work mode and conditions)
- 4 selectable operating modes (Dusk to Dawn): 25 %, 50 %, 75 %, 100 % light brightness
- Energy-efficient thanks to LED technology

TECHNICAL DATA

Electrical data

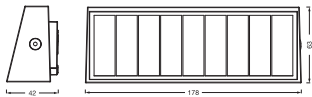
Nominal wattage	7.10 W
Nominal voltage	4,2 V
Nominal current	1700.000 mA
Protection class	III
Operating mode	Battery

Photometrical data

Luminous flux	410 lm
Total luminous flux of contained light sources	700 lm
Luminous efficacy	58 lm/W
Color temperature	3000 K
Light color (designation)	Warm White
Color rendering index Ra	> 80
Flickering metric (Pst LM)	<1 %
Stroboscope effect metric (SVM)	<0.4
Photobiological safety group acc. to EN62778	RG1
Beam angle	100 ° x 90 °

Dimensions & Weight

Length	178.00 mm
Width	42.00 mm
Height	63.00 mm
Product weight	230.00 g



ENDURA STY SOL UPDOWN W DS  
IP44 DG

Materials & Colors

Product color	Dark gray
---------------	-----------

Housing color	Dark gray
Body material	ABS Polycarbonate (PC) POLYM
Cover material	Polycarbonate (PC)
Glow Wire Test according to IEC 60695-2-12	650 °C

### Application & Mounting

Ambient temperature range	-10...+55 °C
Temperature range at storage	-20...+80 °C
Type of protection	IP44
Protection class IK (shock resistance)	IK04
Dimmable	Yes
Mounting type	Surface
Application environment	Outdoor
With light source	Yes
Replaceable light source	No

### Lifespan

Lifespan L70/B50 at 25 °C	54000 h <sup>1)</sup>
Number of switching cycles	100000

<sup>1)</sup> t[h]: L70 / B50 @ 25 °C (Ta), t[h]: L80 / B10 @ 25 °C (Ta), t[h]: L90 / B10 @ 25 °C (Ta)

### Sensor

Type of sensor	Light
Sensor technology	Passive infrared (PIR)

### BATTERY

Type of Battery	Lithium ion
Battery size [GMS]	Others
Number of included batteries	1
Nominal voltage of battery	3.7 V
Nominal capacity of battery	2000 mAh
Battery charging time	9 h

### Certificates & Standards

Standards	CE / UKCA
Luminaire with limited surface temperature, "D sign"	No
Ball shot safe	No

Replaceable light source (EPREL)	Not replaceable
----------------------------------	-----------------

### Additional product data

Product remark	Available from June 2025
----------------	--------------------------






### EQUIPMENT / ACCESSORIES

- Mounting accessories included

### Safety advice

- If the battery compartment (if applicable) does not close securely, stop using the product and keep it away from children. If you think batteries might have been swallowed or placed inside any part of the body, seek immediate medical attention.
- Please avoid: Maximal ambient temperature: +35 °C. Replacement of a battery with an incorrect type that can defeat safeguard (for example, in the case of some lithium battery types). Altitude during operation: 2000 m. Disposal of a battery into fire or a hot oven, or mechanically crushing or cutting of a battery, that can result in an explosion.

### DOWNLOAD DATA

	Documents and certificates	Document name
	User instruction / safety instructions	ENDURA STY SOL UPDOWN W DS IP44 DG
	Legal information	Informationstext 18 Abs 4 ElektroG
	Legal information	Safety insert G11219579
	Declarations of conformity	EU Declaration of Conformity solar light
	Declarations of conformity UKCA	UK Declaration of Conformity solar light

### LOGISTICAL DATA

Product code	Packaging unit (Pieces/Unit)	Dimensions (length x width x height)	Gross weight	Volume
4099854415210	Folding box 1	45 mm x 183 mm x 71 mm	267.00 g	0.58 dm <sup>3</sup>
4099854415227	Shipping box 6	193 mm x 145 mm x 158 mm	1732.00 g	4.42 dm <sup>3</sup>

The mentioned product code describes the smallest quantity unit which can be ordered. One shipping unit can contain one or more single products. When placing an order, for the quantity please enter single or multiples of a shipping unit.

---

## DISCLAIMER

Subject to change without notice. Errors and omission excepted. Always make sure to use the most recent release.