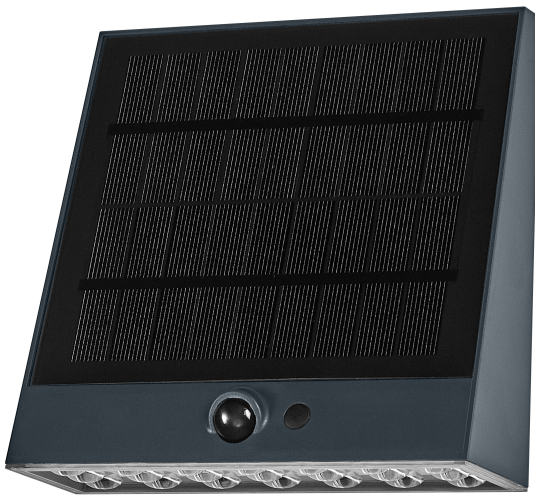


PRODUCT DATASHEET

Endura Style Solar Sensor Wall Fin IP54 Dark Grey

ENDURA STYLE SOLAR BRIGHT SENSOR | Solar-powered luminaires with high luminous flux, motion and daylight sensor and IP65 protection option



Areas of application

- Outdoor
- Entrance lighting
- Patios, balconies
- General illumination
- Facade and building illumination

Product benefits

- Solar powered outdoor LED luminaire
- Easy and quick installation, independent from connection to power supply
- Long-term energy and cost savings

Product features

- Bright light
- Highly efficient monocrystalline solar panel
- PIR motion detection and daylight sensor, matching with housing color
- Lower light smog, on-demand lighting (sensor version)
- Type of protection: IP54
- Operating time with fully charged battery: up to 18 days (depending on the work mode and conditions)
- 4 selectable operating modes (Dusk to Dawn): 1. 100 % light brightness; 2. 25 % light brightness; 3. 10 % light brightness + 100 % light brightness



- after movement detection for 30 second; 4. 0 % light brightness + 100 % light brightness after movement detection for 30 second
- Energy-efficient thanks to LED technology
- Sustainable energy, low environmental impact

TECHNICAL DATA

Electrical data

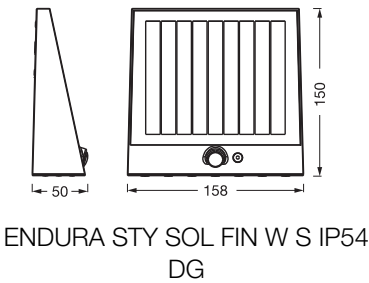
Nominal wattage	10.20 W
Nominal voltage	4,2 V
Nominal current	2430.000 mA
Protection class	III
Operating mode	Battery

Photometrical data

Luminous flux	890 lm
Total luminous flux of contained light sources	1000 lm
Luminous efficacy	87 lm/W
Color temperature	3000 K
Light color (designation)	Warm White
Color rendering index Ra	> 80
Flickering metric (Pst LM)	<1 %
Stroboscope effect metric (SVM)	<0.4
Photobiological safety group acc. to EN62778	RG1
Beam angle	130 °

Dimensions & Weight

Length	158.00 mm
Width	50.00 mm
Height	150.00 mm
Product weight	410.00 g



Materials & Colors

Product color	Dark gray
Housing color	Dark gray
Body material	Polycarbonate (PC) Acrylonitrile butadiene styrene (ABS)
Cover material	Polycarbonate (PC)
Glow Wire Test according to IEC 60695-2-12	650 °C

Application & Mounting

Ambient temperature range	-10...+55 °C
Temperature range at storage	-20...+80 °C
Type of protection	IP54
Protection class IK (shock resistance)	IK04
Dimmable	Yes
Mounting type	Surface
Application environment	Outdoor
With light source	Yes
Replaceable light source	No

Lifespan

Lifespan L70/B50 at 25 °C	54000 h ¹⁾
Number of switching cycles	100000

1) t[h]: L70 / B50 @ 25 °C (Ta), t[h]: L80 / B10 @ 25 °C (Ta), t[h]: L90 / B10 @ 25 °C (Ta)

Sensor

Type of sensor	Light / Motion
Sensor technology	Passive infrared (PIR)
Sensor detection angle	110 °
Detection range of motion sensor	3...5 m

BATTERY

Type of Battery	Lithium ion
Battery size [GMS]	Others
Number of included batteries	1
Nominal voltage of battery	3.7 V
Nominal capacity of battery	2000 mAh
Battery charging time	8 h

Certificates & Standards

Standards	CE / UKCA
Luminaire with limited surface temperature, "D sign"	No
Ball shot safe	No
Replaceable light source (EPREL)	Not replaceable

Additional product data

Product remark	Available from June 2025
----------------	--------------------------






EQUIPMENT / ACCESSORIES

- Mounting accessories included

Safety advice

- If the battery compartment (if applicable) does not close securely, stop using the product and keep it away from children. If you think batteries might have been swallowed or placed inside any part of the body, seek immediate medical attention.
- Please avoid: Maximal ambient temperature: +35 °C. Replacement of a battery with an incorrect type that can defeat safeguard (for example, in the case of some lithium battery types). Altitude during operation: 2000 m. Disposal of a battery into fire or a hot oven, or mechanically crushing or cutting of a battery, that can result in an explosion.

DOWNLOAD DATA

Documents and certificates		Document name
	User instruction / safety instructions	ENDURA STY SOL FIN W S IP54 DG
	Legal information	Informationstext 18 Abs 4 ElektroG
	Legal information	Safety insert G11219579
	Declarations of conformity	EU Declaration of Conformity solar light
	Declarations of conformity UKCA	UK Declaration of Conformity solar light

LOGISTICAL DATA

Product code	Packaging unit (Pieces/Unit)	Dimensions (length x width x height)	Gross weight	Volume
4099854415098	Folding box 1	56 mm x 164 mm x 159 mm	459.00 g	1.46 dm³

Product code	Packaging unit (Pieces/Unit)	Dimensions (length x width x height)	Gross weight	Volume
4099854415104	Shipping box 6	346 mm x 174 mm x 175 mm	2913.00 g	10.54 dm³

The mentioned product code describes the smallest quantity unit which can be ordered. One shipping unit can contain one or more single products. When placing an order, for the quantity please enter single or multiples of a shipping unit.

DISCLAIMER

Subject to change without notice. Errors and omission excepted. Always make sure to use the most recent release.