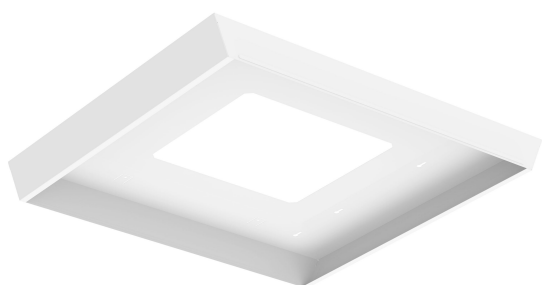


# PRODUCT DATASHEET

## SURFACE MOUNT FRAME 0606

**SURFACE MOUNT FRAME** | The pre-assembled Surface Mount Frames for LED panels are a great solution for quick and easy installation



---

### Areas of application

- Offices, retail outlets and conference rooms
- Reception areas and foyers
- Entrance areas
- Hospitality
- Libraries, schools

---

### Product benefits

- Pre-assembled design: Ready to use out of the box, saving time and effort
- Powder-coated steel frame: Provides durability and resistance to corrosion, extending product lifespan
- Compatibility: Suitable for 1200x300mm or 600x600mm panels, offering versatility in installation options
- Easy installation: No assembly required, facilitating quick setup
- Suspension capability: Can be suspended, enabling flexible placement according to requirements
- Multiple fixing holes: Offers various mounting options, accommodating different installation scenarios
- Cable entries: Allows for organized cable management, enhancing tidiness and safety
- Ideal for retrofit projects: Well-suited for upgrading existing systems without major modifications or disruptions

---

### Product features

- Time-saving: Quick and straightforward installation process reduces labor costs and project timelines
- Durable construction: Ensures long-term performance and reliability, minimizing maintenance needs
- Hassle-free setup: Eliminates the need for assembly, simplifying installation for users
- Flexible placement: Suspension capability offers flexibility in positioning, optimizing space utilization
- Versatile mounting options: Multiple fixing holes accommodate diverse installation requirements, enhancing convenience
- Cost-effective retrofit solution: Ideal for upgrading existing setups, saving on infrastructure overhaul costs and minimizing disruptions

TECHNICAL DATA

Dimensions & Weight

Length	654 mm
Width	600 mm
Height	65.5 mm
Product weight	2280.00 g

LDVAL PAN SURFACE FRAME  
0606

Materials & Colors

Product color	White
---------------	-------

Application & Mounting

Mounting location	Ceiling
Replaceable light source	No

LOGISTICAL DATA

Product code	Packaging unit (Pieces/Unit)	Dimensions (length x width x height)	Gross weight	Volume
4099854246760	Folding box 1	660 mm x 72 mm x 610 mm	2797.00 g	28.99 dm³
4099854246777	Shipping box 2	640 mm x 165 mm x 705 mm	6700.00 g	74.45 dm³

The mentioned product code describes the smallest quantity unit which can be ordered. One shipping unit can contain one or more single products. When placing an order, for the quantity please enter single or multiples of a shipping unit.

DISCLAIMER

Subject to change without notice. Errors and omission excepted. Always make sure to use the most recent release.