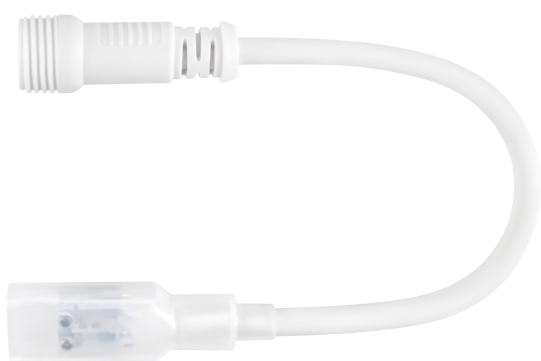


# PRODUCT DATASHEET

## LS AY AC-CD P2 200 P

CONNECTOR FOR LED DRIVER | LED strip connector for LED driver connection



---

### Areas of application

- General indoor illumination
- General outdoor illumination

---

### Product benefits

- Easy installation of connector, no manual wiring required
- Simple and quick installation thanks to twist lock functionality

---

### Product features

- Safe and professional connector of LED strips via integrated over-current protection (3.15A)
- Suitable for connection with LED driver DR P 500W 220-240V 215V P
- Type of protection: IP66

TECHNICAL DATA

Electrical data

Type of current	DC
-----------------	----

Dimensions & Weight



Length	300.0 mm
Width	22.0 mm
Height	20.0 mm
Product weight	56.00 g

Colors & materials

Product color	White
Body material	Polycarbonate (PC)

Temperatures & operating conditions

Ambient temperature range	-20...+45 °C
Temperature range in operation	-20...+45 °C
Permitted rel. humidity during operation	0...93 %




Additional product data



Product remark	Available from September 2024
----------------	-------------------------------


LOGISTICAL DATA

Temperature range at storage	-20...+80 °C
------------------------------	--------------

DOWNLOAD DATA

Documents and certificates		Document name
	User instruction / safety instructions	UI_LED STRIP_HV
	Legal information	Informationstext 18 Abs 4 ElektroG
	Legal information	Safety Insert G11201420

Documents and certificates		Document name
	Declarations of conformity	LS LUM
	Declarations of conformity UKCA	LS LUM

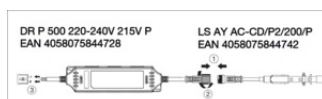
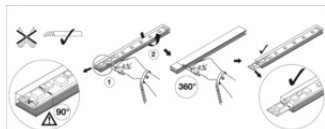
Tender texts	Document name
	Tender documents CONNECTOR FOR LED DRIVER P2 200 P-en

## LOGISTICAL DATA

Product code	Packaging unit (Pieces/Unit)	Dimensions (length x width x height)	Gross weight	Volume
4058075844742	BAG 1	200 mm x 250 mm x 20 mm	72.00 g	1.00 dm <sup>3</sup>
4058075844759	Shipping box 50	347 mm x 347 mm x 174 mm	4093.00 g	20.95 dm <sup>3</sup>

The mentioned product code describes the smallest quantity unit which can be ordered. One shipping unit can contain one or more single products. When placing an order, for the quantity please enter single or multiples of a shipping unit.

## ADDITIONAL CATALOG INFORMATION



## DISCLAIMER

Subject to change without notice. Errors and omission excepted. Always make sure to use the most recent release.