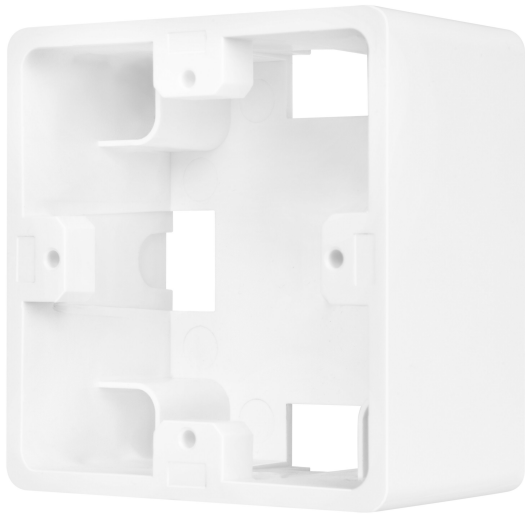


# PRODUCT DATASHEET

## SURFACE MOUNT FRAME

SURFACE MOUNT FRAME | Surface mount frame for MCU SELECT and MCU TOUCH product families



---

### Areas of application

- Rooms with walls where installation of flush-mounted boxes is not possible

---

### Product benefits

- Easy to mount on walls
- Rear or side cable entry possible

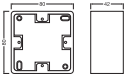
---

### Product features

- Wall mounting frame for mounting CU SELECT and CU TOUCH products

TECHNICAL DATA

Dimensions & Weight



Length	80 mm
Width	80 mm
Height	42 mm
Product weight	135.00 g

Colors & materials

Product color	White
---------------	-------






Capabilities

Type of installation	Surface mounting
----------------------	------------------

Certificates & Standards

Approval marks – approval	CE / UKCA / EAC
---------------------------	-----------------

DOWNLOAD DATA

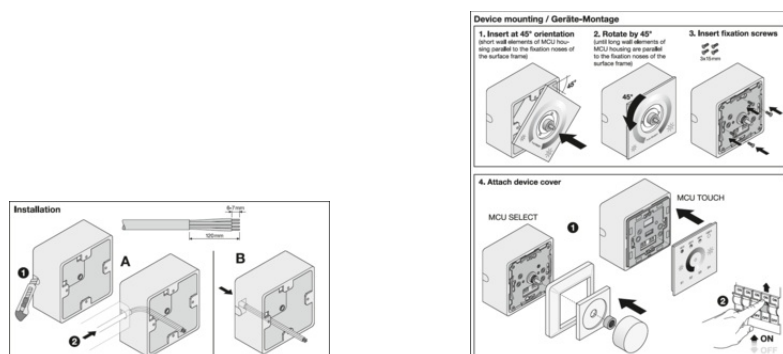
Documents and certificates		Document name
	User instruction / safety instructions	SURFACE MOUNT FRAME
	Legal information	Legal Insert DALI COMPONENTS
	Declarations of conformity	MCU DALI
	Declarations of conformity UKCA	MCU DALI
Tender texts		Document name
	Tender documents	SURFACE MOUNT FRAME-EN

LOGISTICAL DATA

Product code	Packaging unit (Pieces/Unit)	Dimensions (length x width x height)	Gross weight	Volume
4058075843561	Folding box 1	45 mm x 86 mm x 86 mm	152.00 g	0.33 dm <sup>3</sup>
4058075843578	Shipping box 36	290 mm x 186 mm x 280 mm	5809.00 g	15.10 dm <sup>3</sup>

The mentioned product code describes the smallest quantity unit which can be ordered. One shipping unit can contain one or more single products. When placing an order, for the quantity please enter single or multiples of a shipping unit.

## ADDITIONAL CATALOG INFORMATION



## References / Links

– For current information see [www.ledvance.com/light-management-systems](http://www.ledvance.com/light-management-systems)

## DISCLAIMER

Subject to change without notice. Errors and omission excepted. Always make sure to use the most recent release.