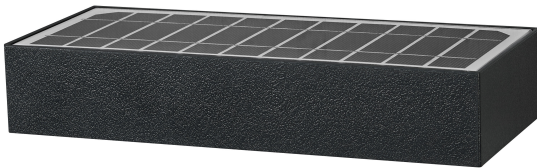


PRODUCT DATASHEET

Endura Style Solar Bricklume Sensor Wide Dark Gray

Endura Style Solar Bricklume Sensor | Solar-powered luminaires with sensor, long battery operation time and IP65 protection for easy wall installation



Areas of application

- Building facades
- Entrance lighting
- Patios, balconies

Product benefits

- Highly efficient monocrystalline solar panel
- Easy and quick installation, independent from power supply
- Sustainable energy

Product features

- PIR motion detector and daylight sensor
- Indirect illumination
- Durable housing material
- Operating time on battery power: up to 30 hours (3W versions) / 20 hours (6W versions, depending on selected operating mode)
- Solar powered outdoor LED luminaire
- Type of protection: IP65

TECHNICAL DATA

Electrical data

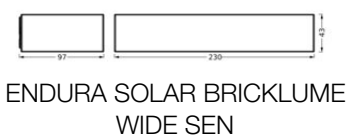
Nominal wattage	6.00 W
Nominal voltage	4,2 V
Nominal current	1400.000 mA
Protection class	III
Operating mode	Battery

Photometrical data

Luminous flux	850 lm
Luminous efficacy	141 lm/W
Color temperature	3000 K
Light color (designation)	Warm White
Color rendering index Ra	> 80
Standard deviation of color matching	6 sdcm
Photobiological safety group acc. to EN62778	RG1
Beam angle	140 ° x 70 °

Dimensions & Weight

Length	230.00 mm
Width	97.00 mm
Height	43.00 mm
Product weight	580.00 g



Materials & Colors

Product color	Dark gray
Housing color	Dark gray
Body material	Polycarbonate (PC)
Cover material	Polycarbonate (PC)
Glow Wire Test according to IEC 60695-2-12	650 °C

Application & Mounting

Ambient temperature range	-20...+40 °C
Type of protection	IP65
Protection class IK (shock resistance)	IK04
Dimmable	No
Mounting type	Surface
Application environment	Outdoor
With light source	Yes
Replaceable light source	No

Lifespan

Lifespan L70/B50 at 25 °C	36000 h ¹⁾
Number of switching cycles	18000

¹⁾ t[h]: L70 / B50 @ 25 °C (Ta), t[h]: L80 / B10 @ 25 °C (Ta), t[h]: L90 / B10 @ 25 °C (Ta)

Sensor

Type of sensor	Light / Motion / PIR
Sensor technology	Passive infrared (PIR)
Sensor detection angle	120 °

BATTERY

Type of Battery	Lithium ion
Battery size [GMS]	18650
Number of included batteries	2
Nominal capacity of battery	3000 mAh
Battery charging time	8 h

Certificates & Standards

Standards	CE / UKCA
Luminaire with limited surface temperature, "D sign"	No
Ball shot safe	No





EQUIPMENT / ACCESSORIES

- Mounting screws and dowels included

Safety advice

- If the battery compartment (if applicable) does not close securely, stop using the product and keep it away from children. If you think batteries might have been swallowed or placed inside any part of the body, seek immediate medical attention.
- Please avoid: Maximal ambient temperature: +35 °C. Replacement of a battery with an incorrect type that can defeat safeguard (for example, in the case of some lithium battery types). Altitude during operation: 2000 m. Disposal of a battery into fire or a hot oven, or mechanically crushing or cutting of a battery, that can result in an explosion.

DOWNLOAD DATA

Documents and certificates		Document name
	User instruction / safety instructions	ENDURA SOLAR BRICKLUME WIDE SEN
	Legal information	Safety insert G11219579
	Declarations of conformity	CE Declaration ENDURA SOLAR BRICKLUME
	Declarations of conformity UKCA	UKCA Declaration ENDURA SOLAR BRICKLUME

LOGISTICAL DATA

Product code	Packaging unit (Pieces/Unit)	Dimensions (length x width x height)	Gross weight	Volume
4099854455858	Folding box 1	50 mm x 254 mm x 106 mm	710.00 g	1.35 dm ³
4099854455865	Shipping box 4	270 mm x 216 mm x 131 mm	2840.00 g	7.64 dm ³

The mentioned product code describes the smallest quantity unit which can be ordered. One shipping unit can contain one or more single products. When placing an order, for the quantity please enter single or multiples of a shipping unit.

DISCLAIMER

Subject to change without notice. Errors and omission excepted. Always make sure to use the most recent release.