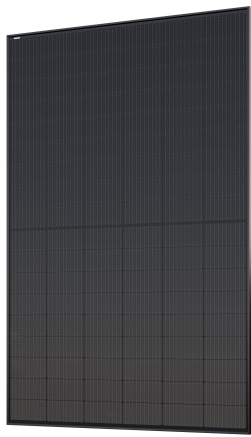


PRODUCT DATASHEET

M 425 N 54 LM -BB-F3

PV PANELS N-TYPE MONOFACIAL FULL BLACK | TopCon monofacial photovoltaic panels in full black version



Areas of application

- Commercial and industrial installations
- Residential installations

Product benefits

- TopCon technology provides higher efficiency due to better sunlight conversion than standard panels
- 15-years of product guarantee, 30-years of linear power output guarantee
- Limited PID-effect (potential induced degradation) thanks to strict quality control in production process
- Very low yearly degradation of the cells thanks to the better resistance to high temperatures
- Durable design and highest production standards guarantees operational reliability and quality

Product features

- Original Stäubli MC4 EVO 2 connectors
- Available in a long cable version
- Frame made of anodized aluminum alloy
- Multi-bus bar (MBB) technology
- Maximum static load up to 5400 Pa

TECHNICAL DATA

ELECTRICAL DATA STC

Maximum Power Pmax (STC)	425 W
Maximum Power Current Imp (STC)	13.41 A
Short Circuit Current Isc (STC)	14.16 A
Maximum Power Voltage Vmp (STC)	31.70 V
Open Circuit Voltage Voc (STC)	38.26 V
Module efficiency factor (STC)	21.76 %

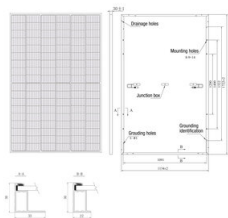
ELECTRICAL DATA NMOT

Maximum Power Pmax (NMOT)	320 W
Maximum Power Current Imp (NMOT)	10.83 A
Short Circuit Current Isc (NMOT)	11.43 A
Maximum Power Voltage Vmp (NMOT)	29.55 V
Open Circuit Voltage Voc (NMOT)	36.35 V

ELECTRICAL DATA STC and NMOT

Power tolerance	3 %
-----------------	-----

MECHANICAL DATA



Type of Facility	Monofacial
Cell material	Mono crystalline
Number of cells	108
Number of bypass diodes	3
With frame	Yes
Type of connection	Staubli MC4 EVO2
Width	1134 mm
Length	1722 mm
Height	30 mm
Product weight	20200.000 g

Cable length	1.2 m
Glass with anti-reflection coating	Yes
Colour backsheet	Black
Colour cells	Dark blue
Colour frame	Black
Front Glass	2.0 mm coated semi-tempered glass

TEMPERATURE RATINGS

Nominal operating cell temperature	44 °C
Temperature coefficient I _{sc}	0.046 %/K
Temperature coefficient P _{mp}	-0.300 %/K
Temperature coefficient U _{oc}	-0.250 %/K




OPERATING CONDITIONS

Maximum series fuse rating	25 A
Temperature range in operation	-40...+85 °C
Front Side Maximum Static Loading	5400 Pa
Rear Side Maximum Static Loading	2400 Pa
Reverse current load	25 A

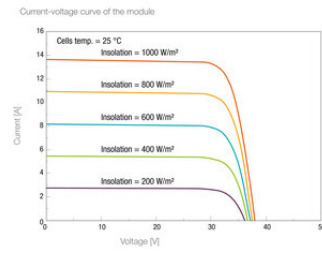
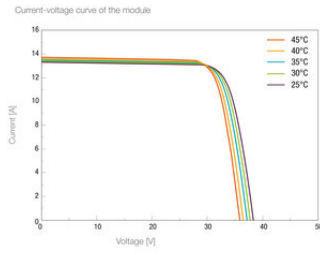
EQUIPMENT / ACCESSORIES

- Product is delivered as a whole, no assembly required from customer
- MC4 EVO 2 connectors are fitted to the panel
- 3 bypass diodes are already installed in the panel

DOWNLOAD DATA

Documents and certificates		Document name
	User instruction / safety instructions	PV MODULE
	Declarations of conformity	CE Certificate PV Panels
	Product family datasheet	M410-430N54LM-BB-F3_EN

ADDITIONAL CATALOG INFORMATION



DISCLAIMER

Subject to change without notice. Errors and omission excepted. Always make sure to use the most recent release.