

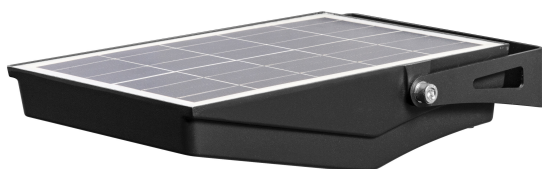
PRODUCT DATASHEET

ENDURA Flood Solar 10 W 4000 K

ENDURA® FLOOD Solar Sensor | Solar-powered flood luminaire with motion and light sensor

Areas of application

- Outdoor



Product benefits

- Economical with a high light output
- Eco-friendly solar powered light
- More programable setting with PIR remote control
- Multiple adjustments of sensor range, daylight detection and hold time
- Automatically switches on and off according to available daylight thanks to photocell light sensor

Product features

- Efficient LED floodlight with high light output
- Solar powered outdoor LED luminaire
- Flexible motion and daylight sensor



TECHNICAL DATA

Electrical data

Nominal wattage	10.00 W
Nominal voltage	3,6 V
Nominal current	2700.000 mA
Protection class	III
Operating mode	Integrated LED driver

Photometrical data

Luminous flux	1200 lm
Luminous efficacy	120 lm/W
Color temperature	4000 K
Light color (designation)	Cool White
Color rendering index Ra	80
Standard deviation of color matching	< 6 sdcm
Flickering metric (Pst LM)	-
Stroboscope effect metric (SVM)	-
Photobiological safety group acc. to EN62778	RG1
Photobiological safety group acc. to EN62471	RG1
Beam angle	95 °

Dimensions & Weight

Length	194.00 mm
Width	67.00 mm
Height	313.00 mm
Product weight	1730.00 g



ENDURA FLOOD SOLAR SENSOR
10W 840

Materials & Colors

Product color	Black
Housing color	Black
Body material	Metal
Glow Wire Test according to IEC 60695-2-12	650 °C
Mercury content	0.0 mg

Application & Mounting

Ambient temperature range	-20...+45 °C
Type of protection	IP65
Protection class IK (shock resistance)	IK04
Dimmable	No
Mounting type	Surface
Application environment	Outdoor
With light source	Yes
Replaceable light source	No

Lifespan

Lifespan L70/B50 at 25 °C	36000 h ¹⁾
Number of switching cycles	36000

¹⁾ t[h]: L70 / B50 @ 25 °C (Ta), t[h]: L80 / B10 @ 25 °C (Ta), t[h]: L90 / B10 @ 25 °C (Ta)

Sensor

Type of sensor	Motion / Daylight
Sensor detection angle	95 °
Sensor controlled switching time	7 s...17 s
Detection range of motion sensor	4...8 m
Detection threshold of daylight sensor	10...30 lx

BATTERY

Type of Battery	Lithium ion battery Li metal button cell battery
Battery size [GMS]	Others
Number of included batteries	1
Nominal voltage of battery	3.2 V
Nominal capacity of battery	6000 mAh
Battery charging time	5 h

Certificates & Standards

Standards	CE / UKCA
Luminaire with limited surface temperature, "D sign"	No
Ball shot safe	No
Replaceable light source (EPREL)	Not replaceable





EQUIPMENT / ACCESSORIES

- Remote control included

Safety advice

- If the battery compartment (if applicable) does not close securely, stop using the product and keep it away from children. If you think batteries might have been swallowed or placed inside any part of the body, seek immediate medical attention.
- Please avoid: Maximal ambient temperature: +35 °C. Replacement of a battery with an incorrect type that can defeat safeguard (for example, in the case of some lithium battery types). Altitude during operation: 2000 m. Disposal of a battery into fire or a hot oven, or mechanically crushing or cutting of a battery, that can result in an explosion.

DOWNLOAD DATA

Documents and certificates		Document name
	User instruction / safety instructions	ENDURA FLOOD SOLAR SENSOR
	Legal information	Legal insert SMART OUTD ENDURA SOLAR WORKLIGHT BAT
	Declarations of conformity	CE Declaration ENDURA FLOOD SOLAR SEN REM
	Declarations of conformity UKCA	ENDURA FLOOD SOLAR SEN

LOGISTICAL DATA

Product code	Packaging unit (Pieces/Unit)	Dimensions (length x width x height)	Gross weight	Volume
4058075762350	Folding box 1	90 mm x 334 mm x 214 mm	2161.00 g	6.43 dm ³
4058075762367	Shipping box 4	384 mm x 356 mm x 245 mm	9178.00 g	33.49 dm ³

The mentioned product code describes the smallest quantity unit which can be ordered. One shipping unit can contain one or more single products. When placing an order, for the quantity please enter single or multiples of a shipping unit.

DISCLAIMER

Subject to change without notice. Errors and omission excepted. Always make sure to use the most recent release.