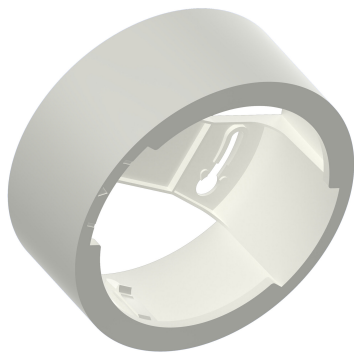


PRODUCT DATASHEET

DL IP44 FRAME DN 115 WT

DOWNLIGHT IP44 FRAME | Surface mounting frame for Downlight IP44



Areas of application

- Direct replacement for luminaires with compact fluorescent lamps
- General illumination
- Public areas
- Stairways
- Corridors
- Shops
- Bathrooms

Product benefits

- Easily installed

Product features

- Robust polycarbonate casing
- Mounting accessories included



TECHNICAL DATA

Dimensions & Weight

Diameter	115 mm
Height	47 mm
Product weight	65.00 g



DL IP44 FRAME DN 115


Materials & Colors








Product color	White
Housing color	White
Body material	Polycarbonate (PC)

Application & Mounting

Mounting type	Surface
Mounting location	Ceiling
Replaceable light source	No

DOWNLOAD DATA

Documents and certificates		Document name
	User instruction / safety instructions	DL IP44 FRAME DN WT

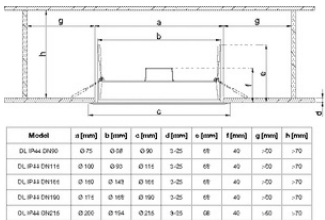
Documents and certificates		Document name
	User instruction / safety instructions	DL IP44 FRAME DN BK/WT
	Legal information	DL IP44 DN 115 8W 830 WT
	Legal information	DL IP44 DN WT
	Legal information	Informationstext 18 Abs 4 ElektroG
	Declarations of conformity	DL IP44 FRAME DN
	Declarations of conformity UKCA	UKCA Declaration of Conformity DOWNLIGHT IP44 DN WT
Tender texts		Document name
	Tender documents	DOWNLIGHT IP44 FRAME DN 115 WT-EN

LOGISTICAL DATA

Product code	Packaging unit (Pieces/Unit)	Dimensions (length x width x height)	Gross weight	Volume
4058075709904	Folding box 1	120 mm x 53 mm x 124 mm	92.00 g	0.79 dm ³
4058075709911	Shipping box 10	279 mm x 250 mm x 140 mm	1099.00 g	9.77 dm ³

The mentioned product code describes the smallest quantity unit which can be ordered. One shipping unit can contain one or more single products. When placing an order, for the quantity please enter single or multiples of a shipping unit.

ADDITIONAL CATALOG INFORMATION



DISCLAIMER

Subject to change without notice. Errors and omission excepted. Always make sure to use the most recent release.