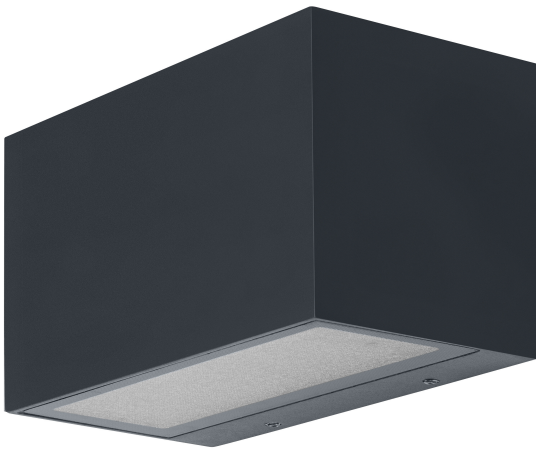


# PRODUCT DATASHEET

## SMART+ Wifi Brick Wall Wide UpDown RGB + W

Smart+ Brick Multicolor | Luminaire with WIFI technology



### Areas of application

- General illumination
- Gardens
- Patios, balconies

### Product benefits

- Easy and quick installation
- Colorful garden lighting with smart and intelligent control options

### Product features

- Controllable via voice control available: Google Assistant or Amazon Alexa
- RGB color control, approx. 16 million color options adjustable
- Dimmable
- Color temperature: 3,000 K (Warm White)
- Network protocol: WiFi
- Type of protection: IP44
- Controllable via SMART+ App (with minimum Android 8.0 or iOS 14.0)



TECHNICAL DATA

Electrical data

|                           |               |
|---------------------------|---------------|
| Nominal wattage           | 14.00 W       |
| Nominal voltage           | 220...240 V   |
| Mains frequency           | 50...60 Hz    |
| Nominal current           | 101.000 mA    |
| Inrush current            | 3 A           |
| Power factor $\lambda$    | $\geq 0.5$    |
| Total harmonic distortion | $< 20 \%$     |
| Protection class          | I             |
| Operating mode            | Mains voltage |

Photometrical data

|  |                   |
|--|-------------------|
| Luminous flux                                  | 600 lm            |
| Total luminous flux of contained light sources | 1350 lm           |
| Luminous efficacy                              | 43 lm/W           |
| Color temperature                              | 3000 K            |
| Light color (designation)                      | Warm White        |
| Color rendering index Ra                       | $\geq 80$         |
| Standard deviation of color matching           | $< 6 \text{ sdc}$ |
| Flickering metric (Pst LM)                     | $\leq 1 \%$       |
| Stroboscope effect metric (SVM)                | $\leq 0.4$        |
| Photobiological safety group acc. to EN62778   | RG0               |
| Photobiological safety group acc. to EN62471   | RG0               |
| Beam angle                                     | 290 °             |

Dimensions & Weight

|                |           |
|----------------|-----------|
| Length         | 145.00 mm |
| Width          | 75.00 mm  |
| Height         | 85.00 mm  |
| Product weight | 692.00 g  |

SMART OUTD WIFI BRICK WIDE  
RGBW

## Materials & Colors

|                 |                    |
|-----------------|--------------------|
| Product color   | Dark gray          |
| Housing color   | Dark gray          |
| Body material   | Aluminum           |
| Cover material  | Polycarbonate (PC) |
| Mercury content | 0.0 mg             |

## Application & Mounting

|  |                             |
|--|-----------------------------|
| Ambient temperature range              | -20...+40 °C                |
| Temperature range at storage           | -20...+80 °C                |
| Type of connection                     | Terminal, 3-Pole (L, N, PE) |
| Type of protection                     | IP44                        |
| Protection class IK (shock resistance) | IK03                        |
| Dimmable                               | Yes                         |
| Type of dimming                        | WiFi                        |
| Mounting type                          | Surface                     |
| Mounting location                      | Wall                        |
| Application environment                | Outdoor                     |
| With light source                      | Yes                         |

## Lifespan

|                            |         |
|----------------------------|---------|
| Lifespan L70/B50 at 25 °C  | 25000 h |
| Number of switching cycles | 12500   |

## Emergency lighting

|                        |    |
|------------------------|----|
| Integrated test switch | No |
|------------------------|----|

## Certificates & Standards

|  |                 |
|--|-----------------|
| Standards  | CE / UKCA       |
| Luminaire with limited surface temperature, "D sign" | No              |
| Replaceable light source (EPREL)                     | Not replaceable |

---





## EQUIPMENT / ACCESSORIES

- Mounting screws and dowels included
- Control via app or voice control requires compatible Smart home system
- For control via SMART+ App, a smartphone or tablet is required (with minimum Android 8.0 or iOS 14.0)

## Safety advice

- All electrical connections must be made by a qualified person.
- Caution, risk of electric shock.
- Product in protection class I. All electrically conductive, metallic housing parts that can absorb voltage during operation or during maintenance in the event of a fault must be continuously connected to the protective earthing conductor.
- Check wall-ceiling for suitability. If uncertain, seek professional advice.

## DOWNLOAD DATA

| Documents and certificates   |  | Document name                   |
|--|--|---------------------------------|
|  | User instruction / safety instructions | SMART WIFI BRICK                |
|  | Declarations of conformity             | EC_SMART OUTD WIFI              |
|  | Declarations of conformity UKCA        | SMART WIFI                      |
|  | EU Data Act                            | SMART WiFi Lamps and Luminaires |

## LOGISTICAL DATA

| Product code  | Packaging unit (Pieces/Unit) | Dimensions (length x width x height) | Gross weight | Volume               |
|---------------|------------------------------|--------------------------------------|--------------|----------------------|
| 4058075564404 | Folding box<br>1             | 152 mm x 92 mm x 87 mm               | 803.00 g     | 1.22 dm <sup>3</sup> |
| 4058075564411 | Shipping box<br>4            | 200 mm x 170 mm x 198 mm             | 3407.00 g    | 6.73 dm <sup>3</sup> |

The mentioned product code describes the smallest quantity unit which can be ordered. One shipping unit can contain one or more single products. When placing an order, for the quantity please enter single or multiples of a shipping unit.

## References / Links

- Further information and frequently asked questions (FAQs) at [www.ledvance.com/consumer/smart/faq](http://www.ledvance.com/consumer/smart/faq)

## DISCLAIMER

Subject to change without notice. Errors and omission excepted. Always make sure to use the most recent release.