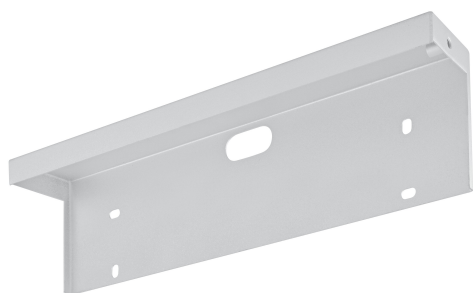


PRODUCT DATASHEET

EM SIGN HB 27M Wall Bracket

Starters for single operation at 230 V AC (ST 111, ST 171, ST 173) | Starters for single operation at 230 V AC



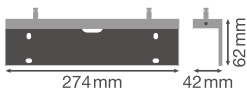
Product features

- Accessories for various types of mounting of Emergency Exit Sign HB 27M



TECHNICAL DATA

Dimensions & Weight



Product weight	280.00 g
----------------	----------


Country-specific categorizations

Order reference	EM SIGN HB 27M
-----------------	----------------

Energy labelling regulation data acc EU 2019/2015

Length	274 mm
Height	62 mm
Width	42 mm

DOWNLOAD DATA

Documents and certificates		Document name
	User instruction / safety instructions	User Instruction Emergency Exit Sign

LOGISTICAL DATA

Product code	Packaging unit (Pieces/Unit)	Dimensions (length x width x height)	Gross weight	Volume
4058075144507	Folding box 1	88 mm x 379 mm x 71 mm	335.00 g	2.37 dm³
4058075144514	Shipping box 6	400 mm x 287 mm x 165 mm	2839.00 g	18.94 dm³

The mentioned product code describes the smallest quantity unit which can be ordered. One shipping unit can contain one or more single products. When placing an order, for the quantity please enter single or multiples of a shipping unit.

DISCLAIMER

Subject to change without notice. Errors and omission excepted. Always make sure to use the most recent release.