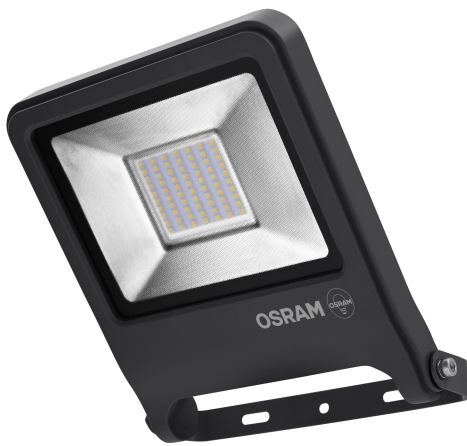


## PRODUCT DATASHEET

### ENDURA FLOOD 50 W 4000 K DG

Starters for single operation at 230 V AC ( ST 111, ST 171, ST 173) | Starters for single operation at 230 V AC



#### Areas of application

- Outdoor
- Replacement for floodlights with halogen lamps
- Garages
- Building facades

#### Product benefits

- Quick and simple installation thanks to low profile, compact and light weight design
- Energy savings of up to 80 % compared to halogen lamp floodlights
- Semi-frosted, tempered glass cover for uniform illumination

#### Product features

- Very bright and functional outdoor LED luminaires
- Symmetrical beam angle: 110° x 110°
- Mounting bracket for up to 180° tilting
- Type of protection: IP65
- Ambient temperature in operation: -20...+45 °C
- Connection via 1 m cable, wiring required



TECHNICAL DATA

Electrical data

Nominal wattage	50.00 W
Nominal voltage	220...240 V
Operating mode	ELECTRONIC CONTROL GEAR (ECG)
Nominal current	220.000 mA
Type of current	AC
Mains frequency	50...60 Hz
Power factor $\lambda$	> 0.90

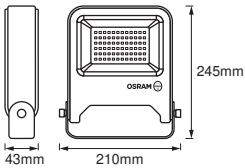
Photometrical data

Luminous flux	4500 lm
Luminous efficacy	90 lm/W
Light color (designation)	Cool White
Color temperature	4000 K
Color rendering index Ra	≥80
Light color	840
Standard deviation of color matching	6 sdcm

Light technical data

Beam angle	120 °
Starting time	≤0.5 s

Dimensions & Weight



Product weight	1070.00 g
----------------	-----------

Temperatures & operating conditions

Ambient temperature range	-20...+45 °C
---------------------------	--------------

## Additional product data

Mercury content	0.0 mg
-----------------	--------

## Capabilities

Dimmable	No
----------	----

## Certificates &amp; Standards

Type of protection	IP65
Standards	CE / EAC / REACH / ROHS

## Country-specific categorizations

Order reference	ENDURA FLOOD 50
-----------------	-----------------

## LOGISTICAL DATA

Temperature range at storage	-30...+70 °C
------------------------------	--------------

## Energy labelling regulation data acc EU 2019/2015

Length	245.00 mm
Height	43.00 mm
Width	210.00 mm

## Safety advice

- All electrical connections must be made by a qualified person.
- Caution, risk of electric shock.
- Product in protection class I. All electrically conductive, metallic housing parts that can absorb voltage during operation or during maintenance in the event of a fault must be continuously connected to the protective earthing conductor.
- To reduce the risk of strangulation the flexible wiring connected to this luminaire shall be effectively fixed to the wall if the wiring is within arm's reach.

## DISCLAIMER

Subject to change without notice. Errors and omission excepted. Always make sure to use the most recent release.