

# PRODUCT DATASHEET

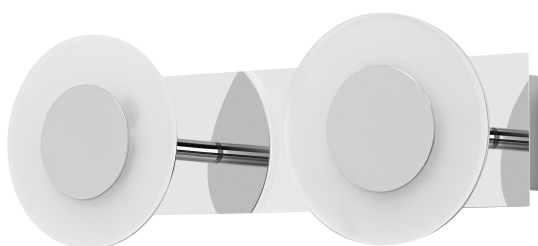
## SMART+ Wifi Orbis Wall Wave IP44 320mm TW

SMART+ WIFI ORBIS WALL WAVE | Smart bathroom decorative ceiling and wall with wifi technology IP44 TW and dimmable luminaires

---

### Areas of application

- Bathrooms



---

### Product benefits

- Easy and quick installation
- Steerable

---

### Product features

- Type of protection: IP44
- Controllable via voice control available: Google Assistant or Amazon Alexa
- Adjustable color temperature via Tunable White: 3,000...6,500 K
- Dimmable
- Network protocol: WiFi
- Controllable via SMART+ App (with minimum Android 8.0 or iOS 14.0)



## TECHNICAL DATA

### Electrical data

Nominal wattage	15.00 W
Nominal voltage	220...240 V
Mains frequency	50...60 Hz
Nominal current	64.000 mA
Inrush current	1.57 A
Inrush current time T <sub>h50</sub>	100 µs
Power factor $\lambda$	> 0.90
Total harmonic distortion	< 20 %
Protection class	II
Operating mode	External LED driver

### Photometrical data

Luminous flux	800 lm
Total luminous flux of contained light sources	1400 lm
Luminous efficacy	50 lm/W
Color temperature	3000...6500 K
Reference control setting of contained light source (Kelvin)	3000 K <sup>1)</sup>
Light color (designation)	Tunable White
Color rendering index Ra	> 80
Standard deviation of color matching	< 6 sdcm
Photobiological safety group acc. to EN62778	RG0
Photobiological safety group acc. to EN62471	RG0
Beam angle	110 °

<sup>1)</sup> Performing a reset will restore the default values set by the manufacturer

### Dimensions & Weight

Length	320.00 mm
Width	120.00 mm
Height	93.00 mm
Product weight	990.00 g

SMART WIFI ORBIS WAVE 320  
IP44 TWCR

Materials & Colors

Product color	Silver
Housing color	Silver
Body material	Polymethylmethacrylate (PMMA)
Cover material	Polycarbonate (PC)
Mercury content	0.0 mg

Application & Mounting

Ambient temperature range	-20...+40 °C
Temperature range at storage	-20...+80 °C
Type of connection	Screw terminal
Type of protection	IP44
Protection class IK (shock resistance)	IK03
Dimmable	Yes
Type of dimming	WiFi
Mounting type	Surface
Mounting location	Ceiling
Application environment	Indoor
With light source	Yes

Lifespan

Lifespan L70/B50 at 25 °C	30000 h
Number of switching cycles	15000

Emergency lighting

Type of emergency operation test	None
Integrated test switch	No

Certificates & Standards

Standards	CE / UKCA
Luminaire with limited surface temperature, "D sign"	No
Replaceable light source (EPREL)	Not replaceable






## EQUIPMENT / ACCESSORIES

- Mounting bracket included
- Mounting screws and dowels included
- Control via app or voice control requires compatible Smart home system
- For control via SMART+ App, a smartphone or tablet is required (with minimum Android 8.0 or iOS 14.0)

## Safety advice

- All electrical connections must be made by a qualified person.
- Caution, risk of electric shock.
- Check wall-ceiling for suitability. If uncertain, seek professional advice.

## DOWNLOAD DATA

Documents and certificates		Document name
	User instruction / safety instructions	SMART WIFI ORBIS WAVE TW IP44
	Legal information	Legal insert Residential luminaires
	Declarations of conformity	CE Declaration Smart Orbis
	Declarations of conformity UKCA	SMART WIFI ORBIS
	EU Data Act	SMART WiFi Lamps and Luminaires

## LOGISTICAL DATA

Product code	Packaging unit (Pieces/Unit)	Dimensions (length x width x height)	Gross weight	Volume
4058075573802	Folding box 1	115 mm x 150 mm x 390 mm	1152.00 g	6.73 dm <sup>3</sup>
4058075573819	Shipping box 4	318 mm x 248 mm x 410 mm	5335.00 g	32.33 dm <sup>3</sup>

The mentioned product code describes the smallest quantity unit which can be ordered. One shipping unit can contain one or more single products. When placing an order, for the quantity please enter single or multiples of a shipping unit.

## References / Links

- Further information and frequently asked questions (FAQs) at [www.ledvance.com/consumer/smart/faq](http://www.ledvance.com/consumer/smart/faq)

---

## DISCLAIMER

Subject to change without notice. Errors and omission excepted. Always make sure to use the most recent release.